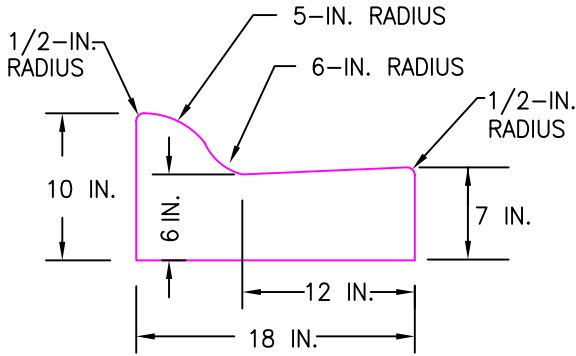
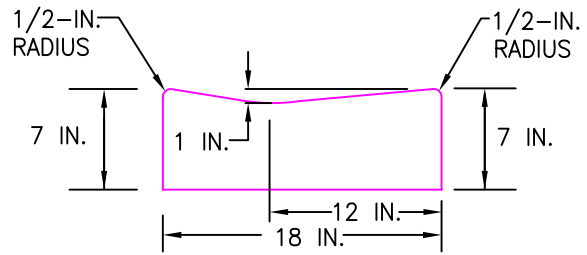


TYPE 'A' CURB CROSS SECTION




ROLLED CURB CROSS SECTION



CURB RAMP AND DRIVEWAY CURB CROSS SECTION

NOTES:

1. ALL CURB SHALL BE TRUE TO LINE AND GRADE.
2. FULL-DEPTH EXPANSION JOINTS SHALL BE PLACED AT ONE-HUNDRED-FOOT INTERVALS AND AT POINTS OF TANGENCY. MASTIC SHALL BE 3/8-INCH THICK MATERIAL.
3. CONTROL JOINTS SHALL BE PLACED AT 10-FOOT INTERVALS AND AT BOTH SIDES OF THE GRATE AT CATCH BASINS.
4. EXTRUDED (SLIP-FORM) CURB AND GUTTER SHALL CONFORM TO WSDOT STANDARD SPECIFICATIONS, SECT. 8-04.3(1)A.
5. THE CITY STANDARD IS TYPE 'A' CURB.  
ROLLED CURB MAY BE ALLOWED WHEN APPROVED BY THE PUBLIC WORKS DIRECTOR.
6. TWO INCHES OF MAINTENANCE ROCK OR CRUSHED SURFACING TOP COURSE IS REQUIRED UNDER ALL CONCRETE.
7. THE TOP, FACE, AND GUTTER SHALL BE BROOM FINISHED PARALLEL TO THE ROADWAY.
8. A MINIMUM OF FIVE FEET SHALL BE REPLACED WHEN REPLACING PORTIONS OF EXISTING CURB.
9. ALL CONSTRUCTION AND MATERIALS SHALL MEET THE SPECIFICATIONS AND BE APPROVED BY THE CITY OF EPHRATA.

| DATE   | REVISION | BY  |
|--|----------|---|
| <b>TYPICAL CEMENT CONCRETE<br/>CURB &amp; GUTTER</b> |          |   |
| EPHRATA PUBLIC WORKS DEPARTMENT                      |          |   |
| <b>CITY OF EPHRATA</b>                               |          |   |
| DRAWN  |          |  |
| CHECK  |          |   |
| SCALE  | NONE     |   |
| DATE   | 02-17    |   |
| GRANT COUNTY   |          | WASHINGTON  |
|  |          | <b>A-5</b>  |