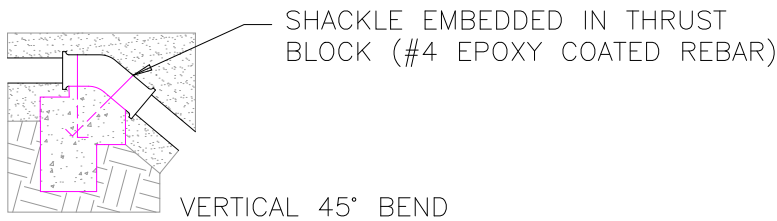
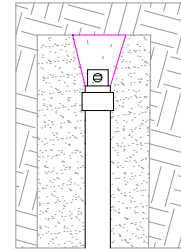
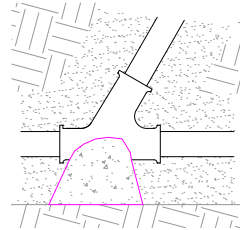
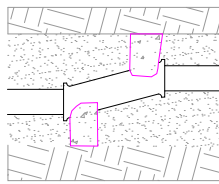
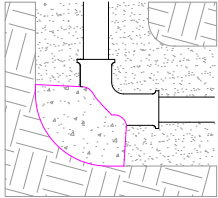
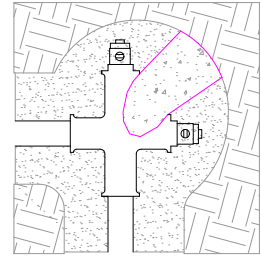
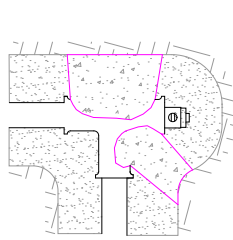
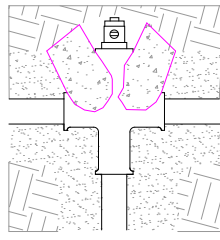


TEE



MINIMUM THRUST BLOCK BEARING AREA REQUIRED *				
SIZE	TEES AND DEAD ENDS	90° BEND	45° BEND	22-1/2° BEND
4 INCH OR LESS	3 SF	4 SF	3 SF	3 SF
6 INCH	4 SF	5 SF	4 SF	4 SF
8 INCH	6 SF	8 SF	6 SF	6 SF
10 INCH	10 SF	13 SF	10 SF	9 SF
12 INCH	14 SF	15 SF	14 SF	12 SF
14 INCH	18 SF	25 SF	18 SF	16 SF
16 INCH	23 SF	32 SF	23 SF	20 SF

* BASED ON A PIPE TEST PRESSURE OF 250 PSI AND BEARING STRENGTH OF SOIL AT 3000 LBS./SQ. FT. FOR OTHER CONDITIONS REVISE AND INCREASE ACCORDINGLY AS APPROVED BY THE ENGINEER.

NOTES:

1. THRUST BLOCKS ARE TO EXTEND TO UNDISTURBED GROUND.
2. INCREASE THRUST BLOCK AREA BY 50% IN SAND.
3. WRAP ALL FITTINGS WITH 8-MIL POLYETHYLENE ENCASEMENT.
4. CONCRETE SHALL NOT COME INTO CONTACT WITH PIPE, VALVES, OR FITTINGS.
5. DEAD-END LINES SHALL HAVE A FIRE HYDRANT ASSEMBLY OR A BLOW-OFF ASSEMBLY INSTALLED AT THE END OF THE LINE TO FACILITATE FLUSHING.
6. ALL THRUST BLOCKS ARE REQUIRED TO BE FORMED ON THE SIDES WITH SUITABLE MATERIAL AND THE BACK AGAINST UNDISTURBED EARTH.
7. ALL CONSTRUCTION AND MATERIALS SHALL MEET THE SPECIFICATIONS AND BE APPROVED BY THE CITY OF EPHRATA.

WATERMAIN THRUST BLOCKS

EPHRATA PUBLIC WORKS DEPARTMENT

CITY OF EPHRATA

DRAWN

CHECK

SCALE NTS

DATE 10/03/08

GRANT COUNTY



WASHINGTON

DATE	REVISION	BY

