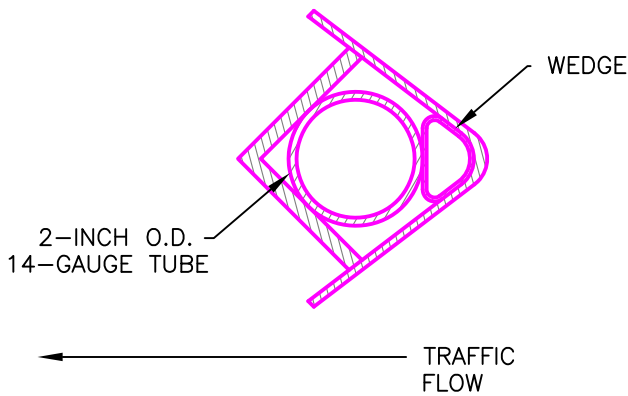
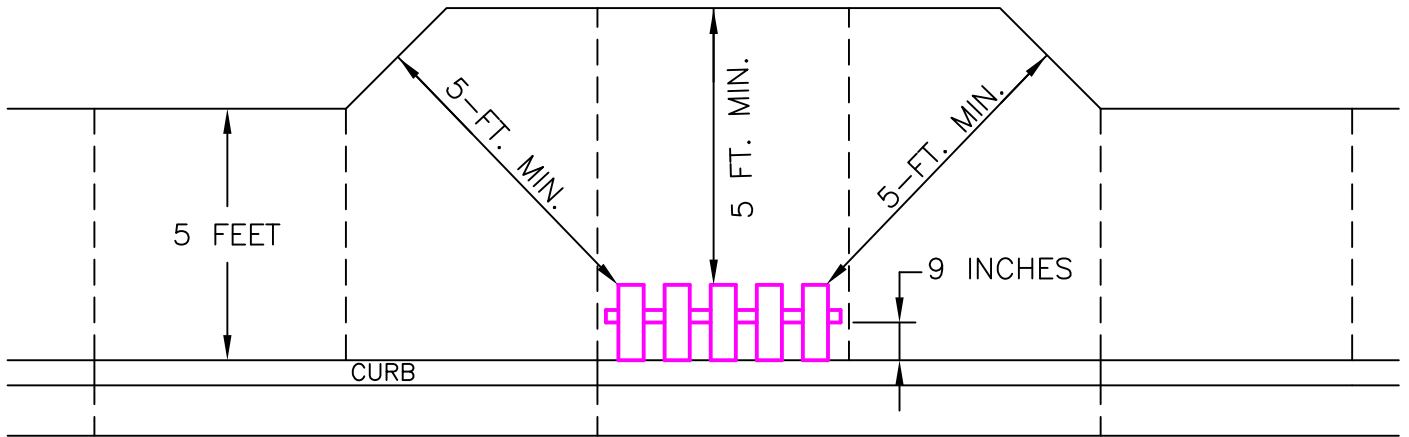
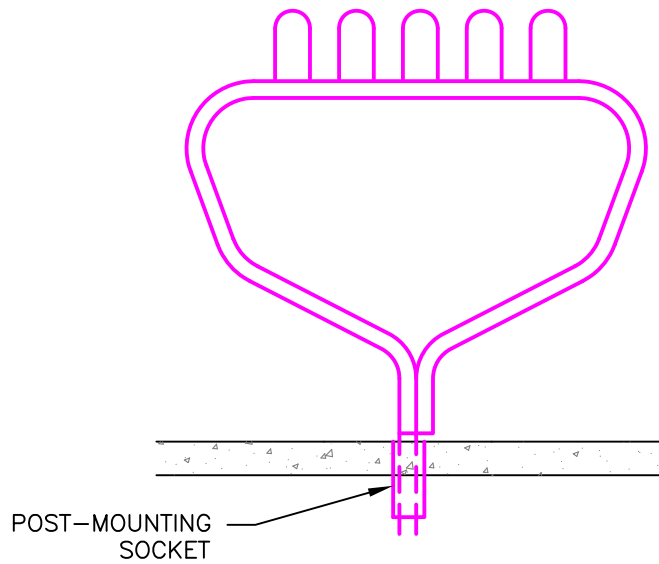


*** THIS STANDARD TO BE USED ONLY AFTER WRITTEN APPROVAL BY THE CITY PUBLIC WORKS DIRECTOR.**



POST MOUNTING SOCKET



TYPE 2
(MULTIPLE BOX INSTALLATION)

NOTES:

1. POST MOUNTING SOCKET TO BE INSTALLED 9 INCHES BEHIND BACK OF CURB.
2. BOTTOM OF MAILBOXES SHALL BE 38 INCHES TO 42 INCHES ABOVE FLOW LINE OF THE GUTTER.
3. A MINIMUM OF 5 FEET OF CLEARANCE BETWEEN MAILBOXES AND THE BACK EDGE OF THE SIDEWALK IS REQUIRED.
4. ALL CONSTRUCTION AND MATERIALS SHALL MEET THE SPECIFICATIONS AND BE APPROVED BY THE CITY OF EPHRATA.
5. ALL INSTALLATIONS SHALL BE COORDINATED WITH THE UNITED STATES POSTAL SERVICE.

MAILBOX SUPPORT SYSTEM

EPHRATA PUBLIC WORKS DEPARTMENT

CITY OF EPHRATA

DRAWN
CHECK
SCALE NTS
DATE 10/03/08



GRANT COUNTY

WASHINGTON

A-7A

DATE	REVISION	BY